



## Measure in order to manage: Addressing deforestation risks with Global Forest Watch Pro

RSPO RT18

12-15 November 2018

Kota Kinabalu, Malaysia

Anne Rosenbarger  
SE Asia Commodities Manager  
World Resources Institute Indonesia  
[anne.rosenbarger@wri.org](mailto:anne.rosenbarger@wri.org)



REMOTE  
SENSING



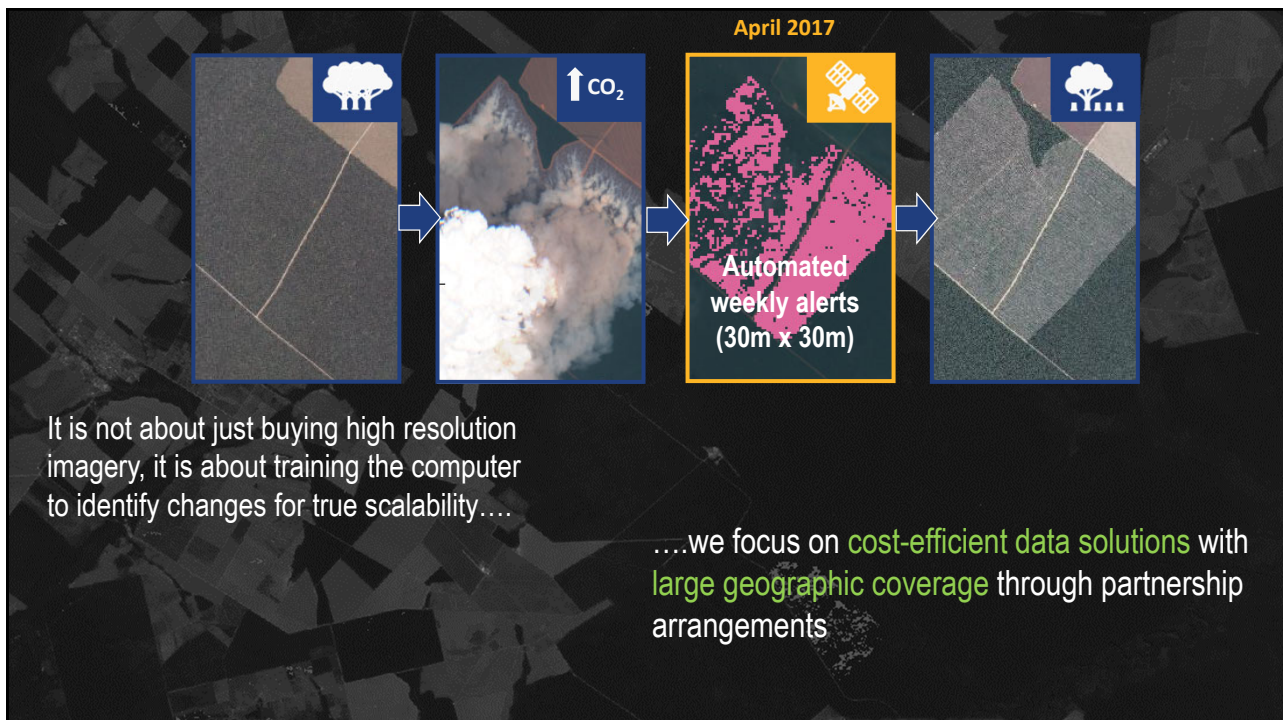
CLOUD  
COMPUTING



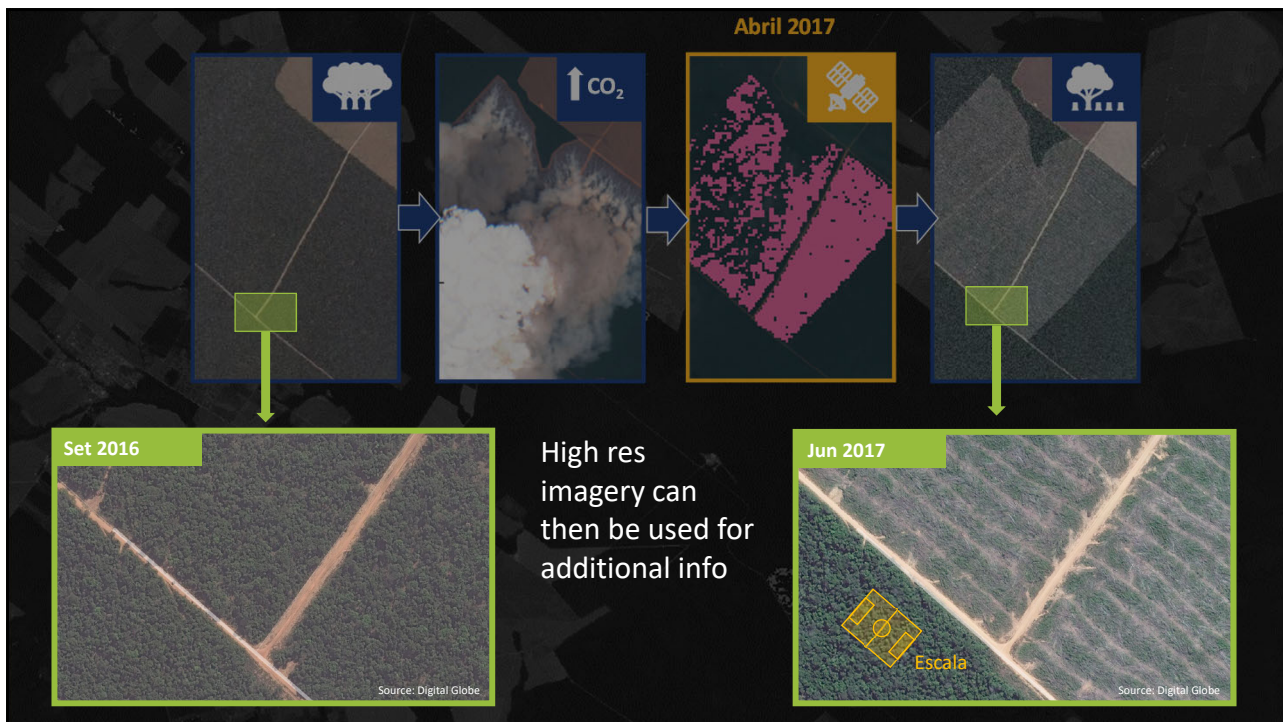
BIG DATA


GLOBAL  
FOREST  
WATCH


Image: NASA












**WAGENINGEN**  
UNIVERSITY & RESEARCH



**GLOBAL  
FOREST  
WATCH**

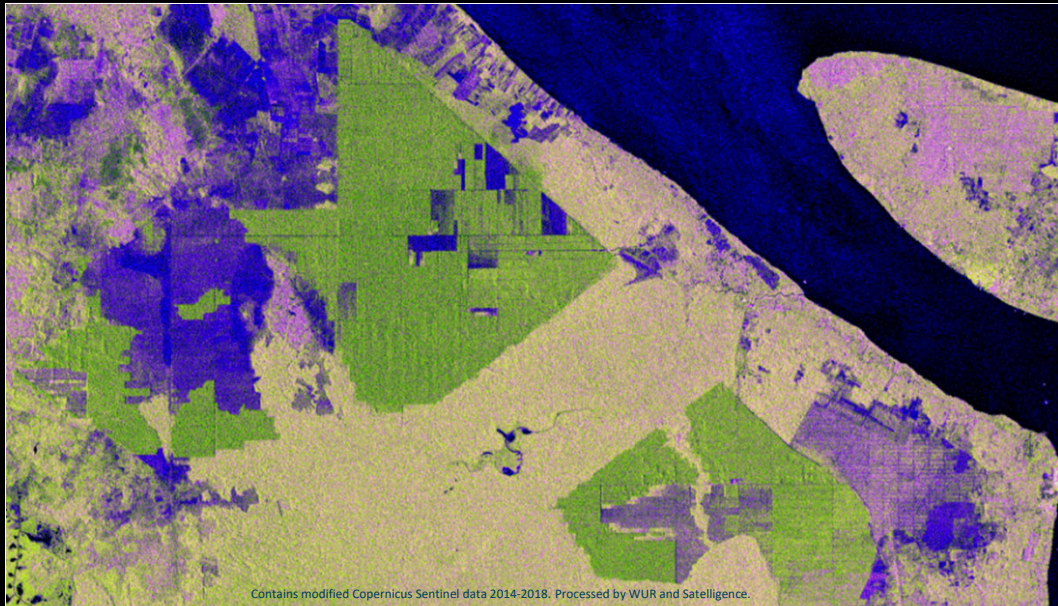


**SATELLIGENCE**

### Development of a new radar-based deforestation alert system

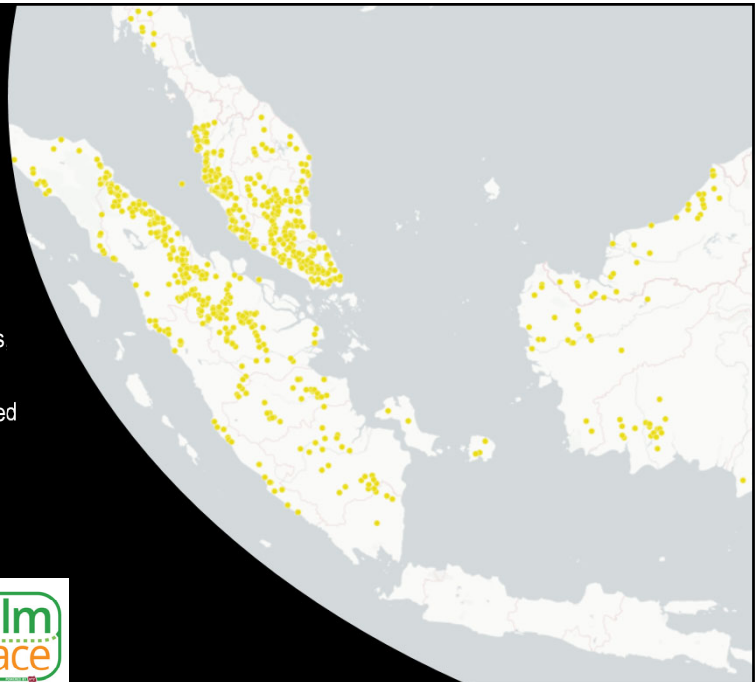
- Partnering to create an **automated, publicly available** alert system for all of Indonesia and Malaysia, integrated into GFW
- Based on **free of charge** Sentinel – 1A and B radar data
  - Regular and consistent observations **every 6-12 days**
  - **Penetrates cloud cover** → No information gaps
  - **High spatial detail (10m)**
  - **Data continuity:** 10+ years data guarantee

Example: 237  
observations  
Siak, Riau,  
Indonesia  
2014 - 2018



## Online this week! The Universal Mill List

- 1,815 mills across 26 countries
- Developed by WRI, Rainforest Alliance, Proforest and Daemeter
- Data integrated from numerous company submissions  
RSPO and its members, FoodReg
- Verified using high resolution imagery and standardized methodology
- Cross-referenceable "Universal IDs"
- Publicly available → hosted on Global Forest Watch, PalmTrace, GeoRSPO



## COUNT IT

We collected data



Commodity related datasets made available in platforms  
(eg: palm oil mills, concessions)



Methods created for supply chain assessments  
(eg: PALM risk tool)

## CHANGE IT

We partnered with organizations to apply this data to their operations and test use cases



## SCALE IT

Once the strategy was successful, we looked in ways to scale it up

What if everyone, everywhere could do it, without depending on us?



Concept note launched at WEF 2017, led to the creation of



## GLOBAL FOREST WATCH PRO



### Upload

Create a portfolio of your sourcing or investment locations in GFW Pro. Upload or select from GFW-provided locations.

### Analyze

See tailored risk analysis, actively monitor for issues, and assess progress towards commitments using forest insights from satellite imagery.

### Collaborate

Share secured data & insights with colleagues, suppliers and customers through the platform.

### Decide

Prioritize locations for management actions to achieve internal policies or sustainability commitments.





## GFW Pro: why is it different?



*Portfolio level*



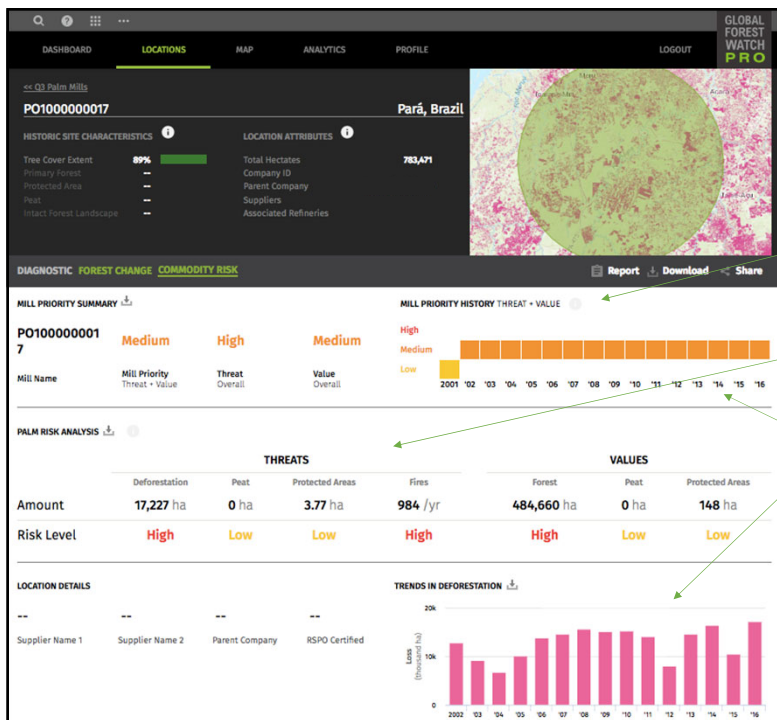
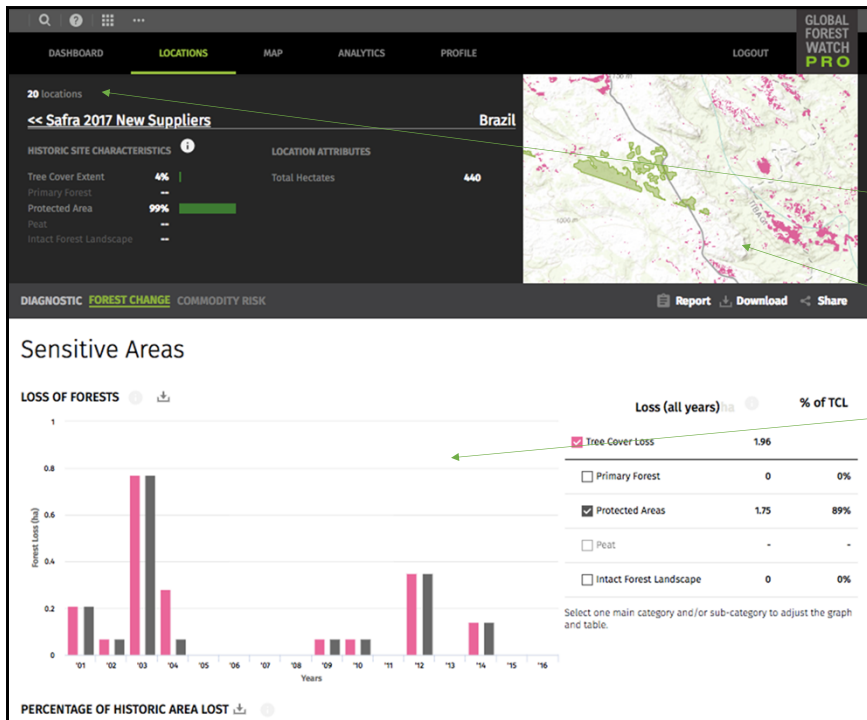
*Dashboard*

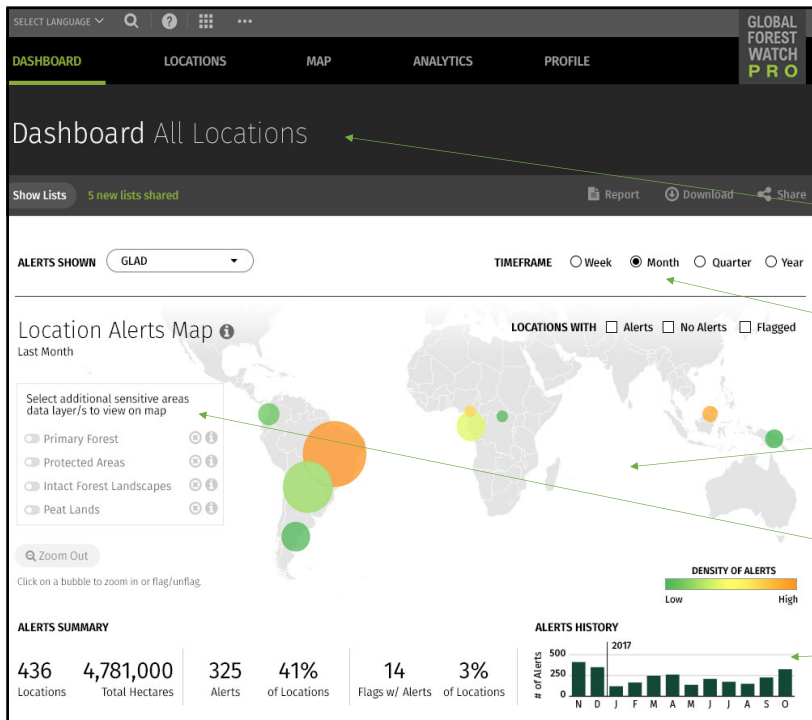


*Protected login*



*Workflow / share*





## Example: Alert Dashboard

Near real time alerts for tree cover loss and fire for a list or portfolio

Choose timeframe

Interactive map to prioritize areas with highest density of alerts

Contextualize where alerts are happening

Track alert history over time

# Examples of real use cases



## WHO?



## WHAT?



Deforestation



Soy, palm, cocoa

## WHERE?



Globally

## CEO of Cargill at the company's Report on Forests

We partnered with World Resources Institute's Global Forest Watch to map 1,918 Cargill sourcing areas for cocoa, palm and soy across 14 countries to establish a baseline for tree cover loss as of 2014 that we can use to help measure and track our progress against our implementation plans.



David MacLennan

Source: Cargill Report on Forests

## WHO?



## WHAT?



Deforestation



Fires



Palm

## WHERE?



Globally

## HCV &amp; NPP Mapping and Monitoring

- ✓ Digitize RSPO NPP and HCV areas
- ✓ Upload into private accounts in GFW Pro
- ✓ Develop a protocol for monitoring and responding to alerts
- ✓ Engage with RSPO members to use the system to monitor to their own areas
- ✓ Discussions underway to revamp fire monitoring protocol for all RSPO member concessions

## Collaborative monitoring and response at the landscape/district level

- Mobilize “**consortiums of the willing**” for pilot districts in Indonesia  
—Private sector, implementation partners & government



- Collaboratively verify** alerts for more efficient use of resources



- Identify and deliver **alerts that matter most** for the pilot areas



- Align on and implement **coordinated interventions** for maximum impact

- Evaluate the impact** of interventions, **refine** and **scale**



GLOBAL  
FOREST  
WATCH  
PRO

## Vision for the future

INPUT



SUB-NATIONAL  
JURISDICTIONS



SUPPLY SHEDS



SHAPE FILES

EVALUATE



DEFORESTATION



PROTECTED  
AREAS



FIRES



MORE!

FUTURE



GHG EMISSIONS



WATER RISKS



RESTORATION



SOCIAL RISKS



MORE...

