

A RESEARCH AGENDA FOR ACTION: THE 5W's & 1H

OI SOO CHIN
Impacts & Evaluation Director, RSPO



**A Renewed Commitment to
Achieving Market Transformation**



Overview



WHAT

is the impact
of RSPO
certification?



WHERE

are we now in
terms of
research?



WHAT

is the RSPO
Research
Agenda?

WHEN

was it
developed?



WHY

is there a
need for a
Research
Agenda?



HOW

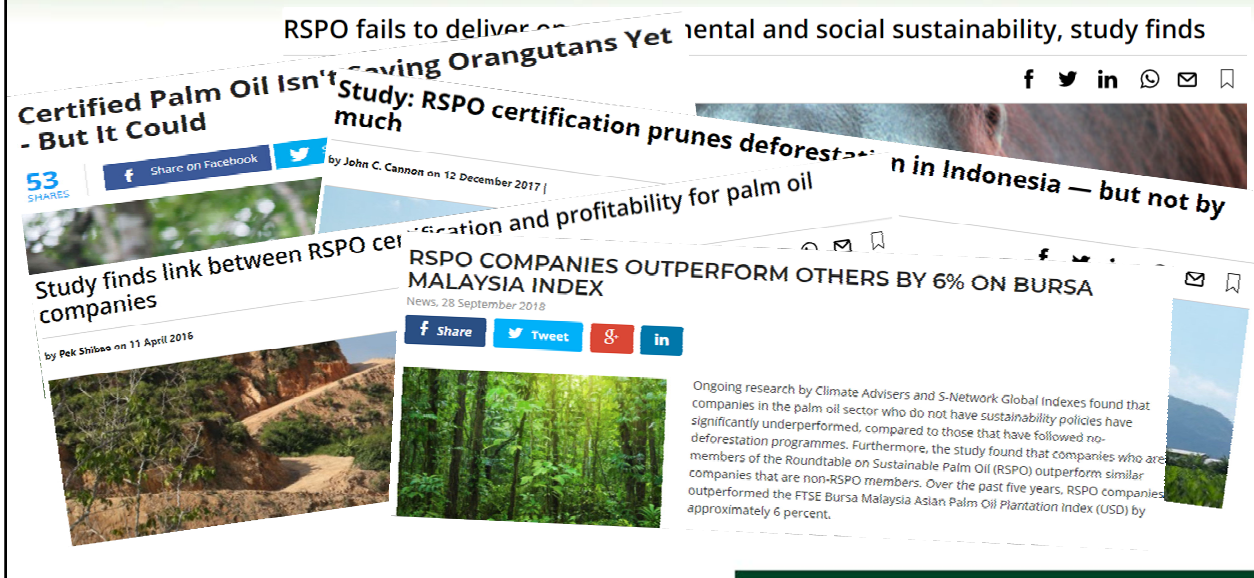
will the
Research
Agenda be
used?



WHO

will be
involved?

WHAT is the impact of RSPO certification?



WHAT is the impact of RSPO certification?



TOTAL NUMBER OF RSPO IMPACT RESEARCH ≈ 13

Independent
RSPO Commissioned

■ Economic
■ Environmental
■ Social

Negative/Neutral

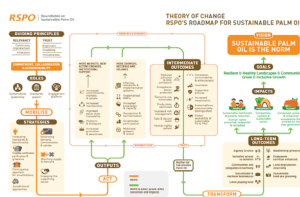
■ Positive

Economic
Environmental
Social

WHERE are we now in terms of impacts research on RSPO?



WHAT is the RSPO Research Agenda? WHEN was it developed?



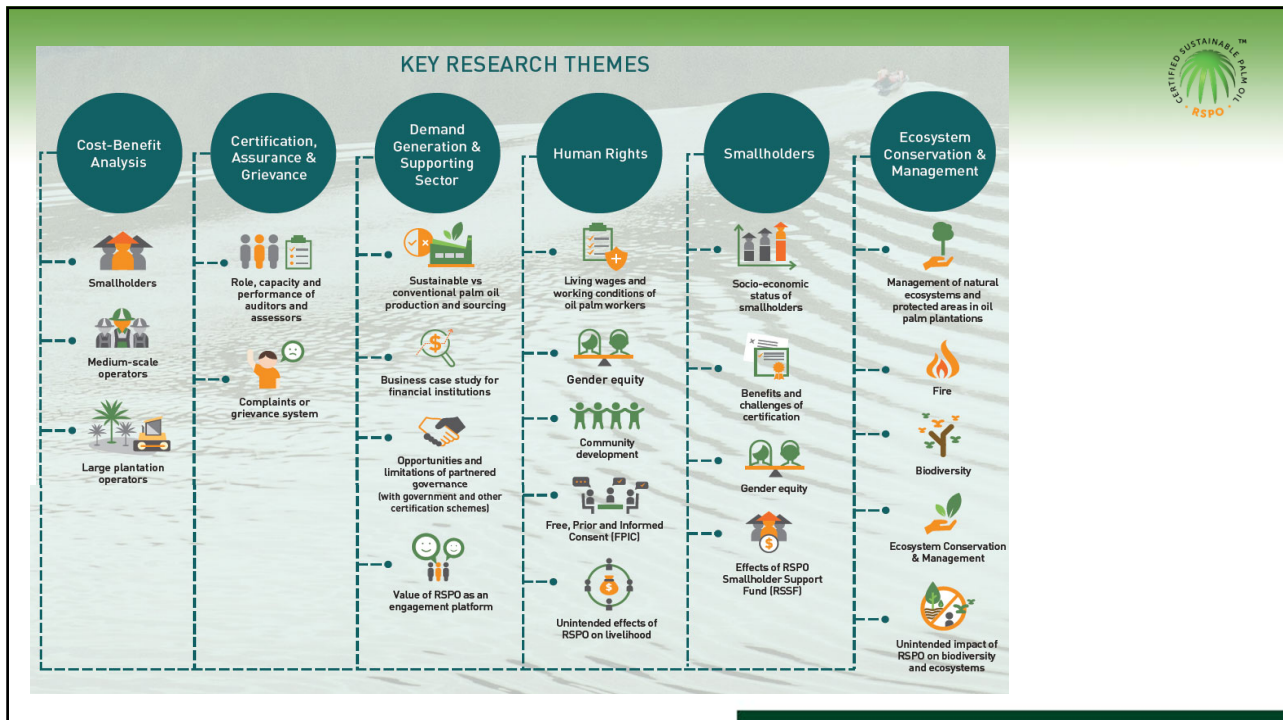
THEORY OF CHANGE (ToC)

Roadmap of how RSPO intends to achieve vision of transforming markets to make sustainable palm oil the norm.

2017

2018



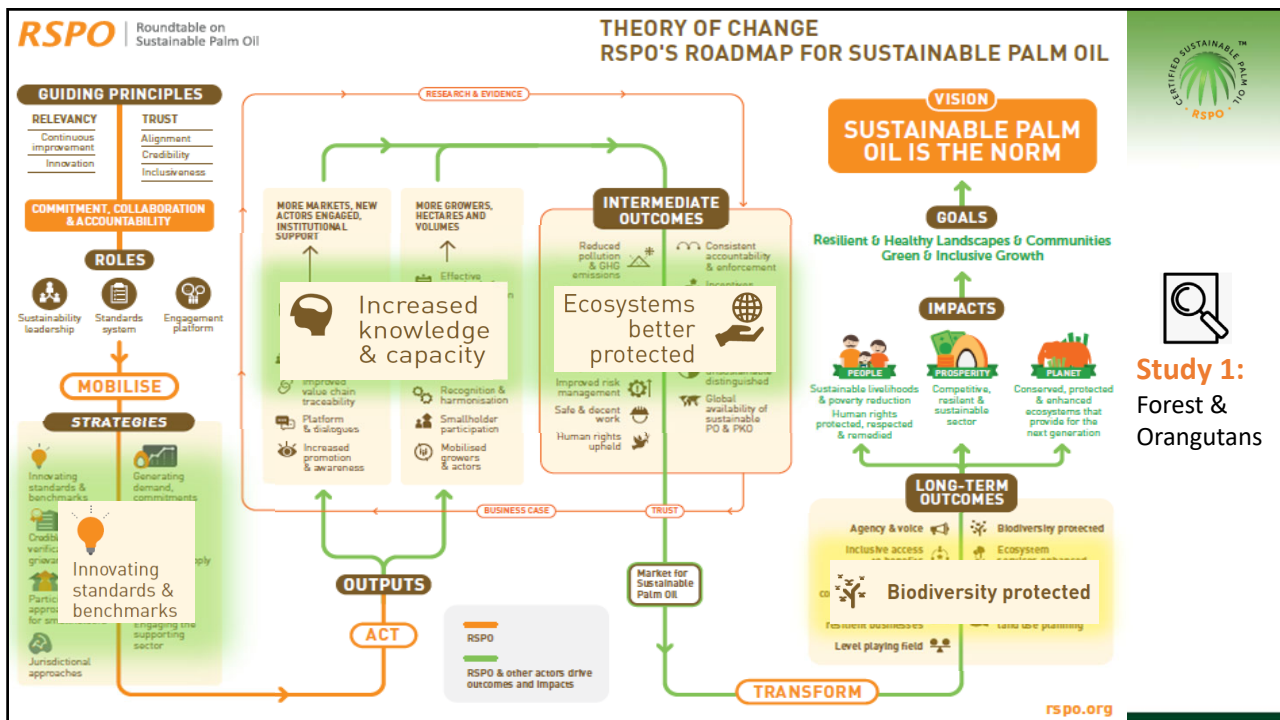
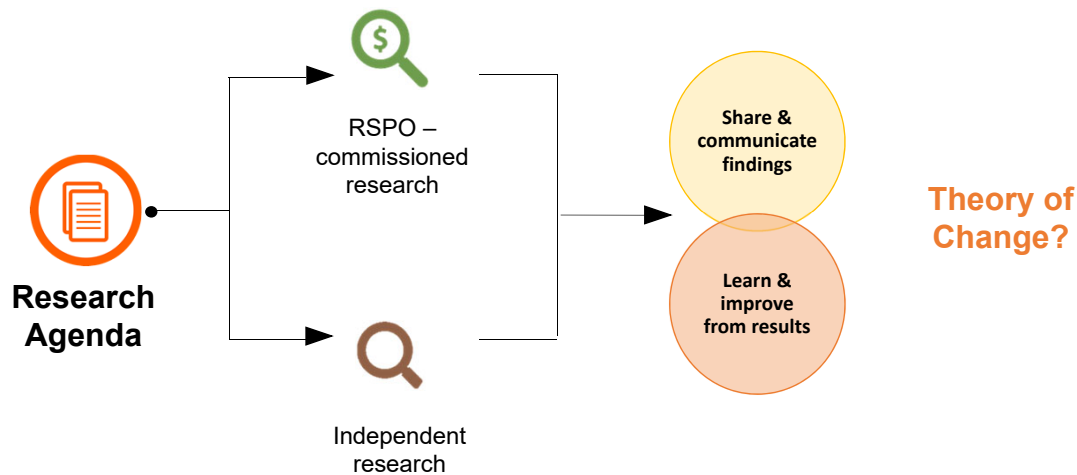


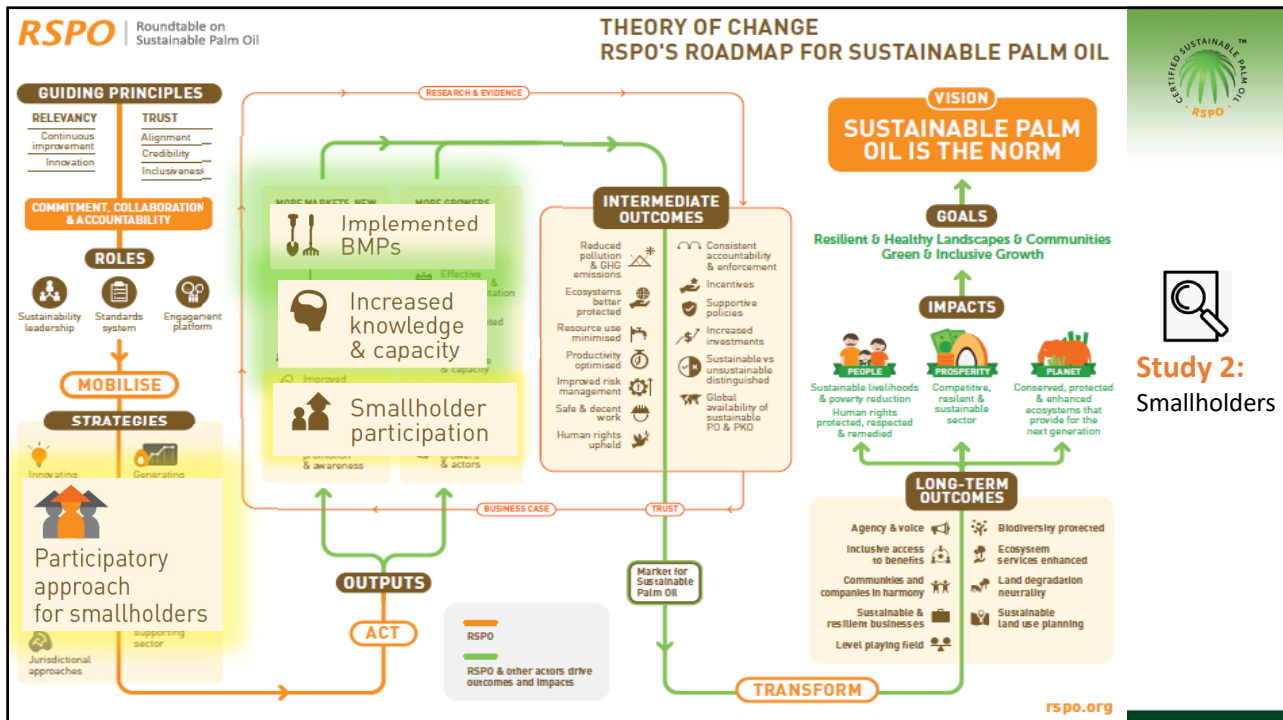
WHY have a Research Agenda?

- To **focus, inform and coordinate research work** to understand performances and impacts of RSPO certification
- To **test and validate RSPO Theory of Change (ToC)**
- To reach out and engage with the research community at large to **foster collaboration and research partnership on a global scale**
- To **address gaps and challenges** in impacts research



HOW will the Research Agenda be used?





WHO is involved?

Will require **collaborative efforts** from all stakeholders




RSPO

Roundtable on Sustainable Palm Oil

[Smallholders Hub](#)
[PalmTrace](#)
[News & Events](#)
[Key Documents](#)
[中文版](#)

[ABOUT RSPO](#)
[MEMBERSHIP](#)
[CERTIFICATION](#)
[SUSTAINABILITY COLLEGE](#)
[P&C REVIEW](#)
[IMPACTS](#)

MyRSPO




Research and Evidence

As part of our **Monitoring and Evaluation (M&E)** system and in line with the **RSPO's Theory of Change**, research serves as an important avenue for us to gain insights into the impacts of RSPO's work. It not only helps to generate evidence of our impacts, but also helps to fill our knowledge gaps and capture the lessons learned, which can then be applied to our current work, challenges and future initiatives. This is crucial for us to drive continuous improvement of our standards for the benefit of all our stakeholders.

In this section, you will be able to find information relating to the key research priorities of RSPO as well as the latest evidences on the impacts of RSPO.


Contact Us

If you have questions or comments about the RSPO's research work, please contact our **Research and Advisory Manager**.




Download RSPO's research agenda to learn about key research priorities

[Research Agenda](#)



Interested in conducting research on RSPO? Submit your request below

[Research Request](#)



Learn about research outcomes and impacts of RSPO certification below

[Research Library](#)



RT16
 2018
 Kota Kinabalu
 Sabah Malaysia
 AN EVENT BY **RSPO**

A Renewed Commitment to Achieving Market Transformation



THANK YOU